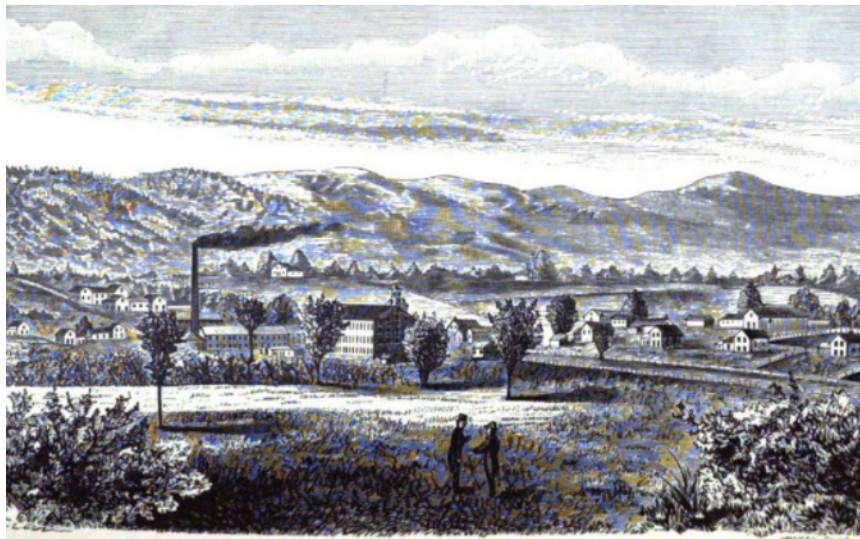


# Rediscovering the Lost Mill Villages of West Pittsfield: Stearnsville, Barkerville, and the Tillotson Osceola Mill

Come learn the rich history of the Mill Villages of West Pittsfield and the Southwest Branch of the Housatonic River. Mills date back to 1768 and provided virtually all of the social and economic growth of the area in the 19<sup>th</sup> century. Free and participants will receive a copy of an illustrated history.



BARKERVILLE.

**Dates and Time:** Saturday, September 21 at 1 PM and same presentation repeated on Saturday, October 5 at 1 PM. Slide discussion followed by optional 1½ mile walk to former site of Barkerville Mill Village.

**Location:** BEAT -Berkshire Environmental Action Team. 20 Chapel St.; Pittsfield, MA. This historic building was erected in 1867 as a Mission Church of St. Stephens in Pittsfield and is one of the oldest public buildings in West Pittsfield.

**Directions:** West Housatonic St. (Route 20) west. Left on Lebanon Ave. at stop light. One mile to left on Melbourne Rd. then first right after bridge to Chapel St. BEAT Center is first building on right.

**To Register:** Christopher Gallagher: [gallagherfamily4@myfairpoint.net](mailto:gallagherfamily4@myfairpoint.net) or cell: 603-562-5863.