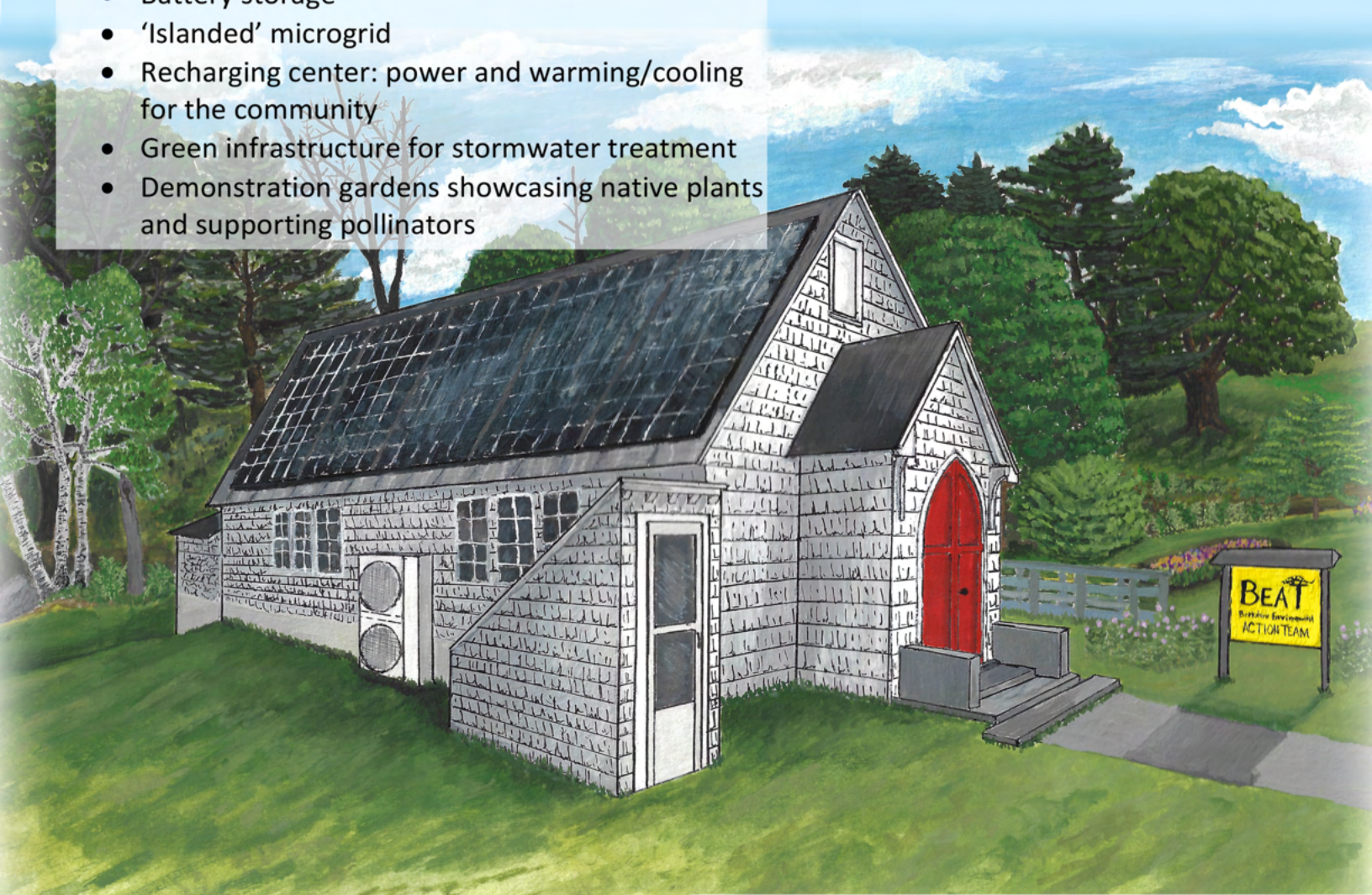




Environmental Leadership & Education Center

A MODEL SUSTAINABLE PROPERTY

- Photovoltaic array
- Battery storage
- 'Islanded' microgrid
- Recharging center: power and warming/cooling for the community
- Green infrastructure for stormwater treatment
- Demonstration gardens showcasing native plants and supporting pollinators



TRAINING & EDUCATION

- Immersive educational displays
- Many aspects of environmental protection demonstrated

COWORKING FOR BEAT & COMMUNITY

- Offices and open work spaces for BEAT staff and volunteers
- Work space as a resource for the neighborhood and community

Because an informed & engaged public is the environment's best defense!

Berkshire Environmental Action Team • 20 Chapel St, Pittsfield, MA 01201
413-464-9402 • team@thebeatnews.org • TheBEATNews.org



ENVIRONMENTAL LEADERSHIP & EDUCATION CENTER

OUR VISION FOR THE FUTURE



BEAT is helping to grow the next generation of environmental leaders. Our new space will allow us to reach more people in new and different ways. In addition to our regular staff, BEAT hires Program Associates, Interns, Work-Study students, and engages dozens of volunteers each year. All of these individuals bring the promise of a better future for environmentalism, a dearly needed vocation in current times. We partner with area high schools, colleges, and universities to offer for-credit projects. Those students and community members who we hire or engage become fully immersed in BEAT's work, and, with guidance, are encouraged to take on considerable responsibility. We offer opportunities to interact with Berkshire legislators and to give public presentations about their BEAT work.

Our new building will be an Environmental Leadership & Education Center. The building will be fully accessible, including an accessible balcony for viewing the river. Our hands-on educational displays will encourage visitors to use a full range of senses to explore the natural world. We will restore the riverbank with native species to support pollinators, birds, and other wildlife. We will demonstrate how this is done to prevent erosion, stabilize the riverbank and provide food and shelter for wildlife. The landscape will have native trees and shrubs, native shade-plant garden, native pollinator meadows with milkweed for monarch butterflies, and a rain garden to show best practices for stormwater treatment. Bird feeders will attract a variety of birds, and we will conduct annual benthic macro-invertebrate sampling with our river access.

As a microgrid, **our Recharge Center will demonstrate how solar energy can not only supply ongoing energy needs, but be stored so our building can provide a safe haven in the event of a power outage.** No fossil fuels will be used for energy. Solar installations will include battery storage to charge electronics, heat-pumps will power heating and cooling, and we will install an electric vehicle (EV) charging station.

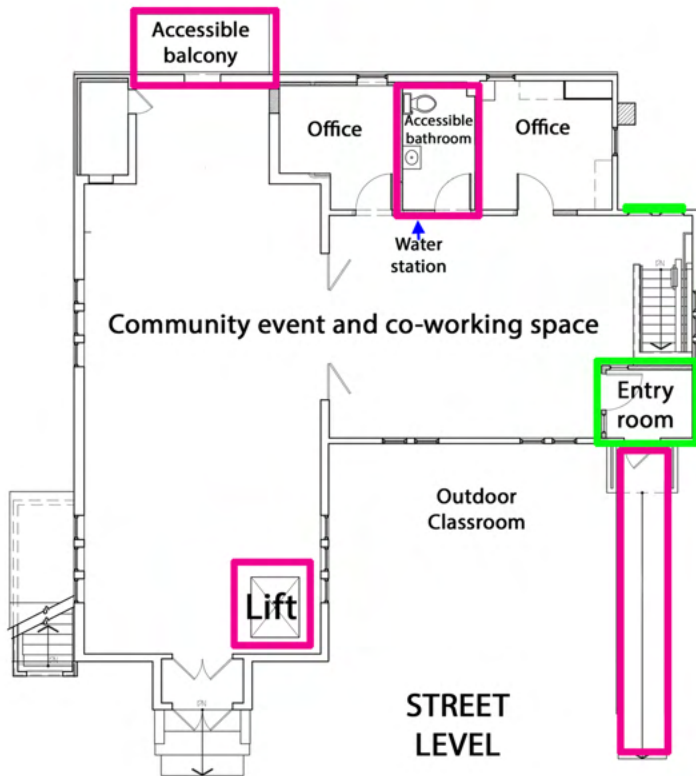
ROOM TO MEET, WORK, AND LEARN

Our Environmental Leadership & Education Center offers plenty of room to meet in several small groups or a couple large groups. We will have presentations, show films, gather in a circle (indoors or out), or get messy in our downstairs workshop. We've already had partners offer pop-up grant meetings for ad hoc groups and small organizations and we have teacher trainings scheduled for summer 2022. We will have a water quality testing area and microscope workstations to discover the world of the very small with the ability to project that on the wall to make that world accessible to all.



Our new Center offers unlimited possibilities to support BEAT's mission and bring awareness and appreciation of the environment to our community in new and engaging ways.

ENVIRONMENTAL LEADERSHIP & EDUCATION CENTER BUILDING DESIGN



ACCESSIBILITY IMPROVEMENTS
WEATHERIZATION
NEW SPACES

TRAINING & EDUCATION

- Immersive educational displays on all aspects of environmental protection, because an informed and engaged community is the environment's best protection!

COWORKING FOR BEAT & COMMUNITY

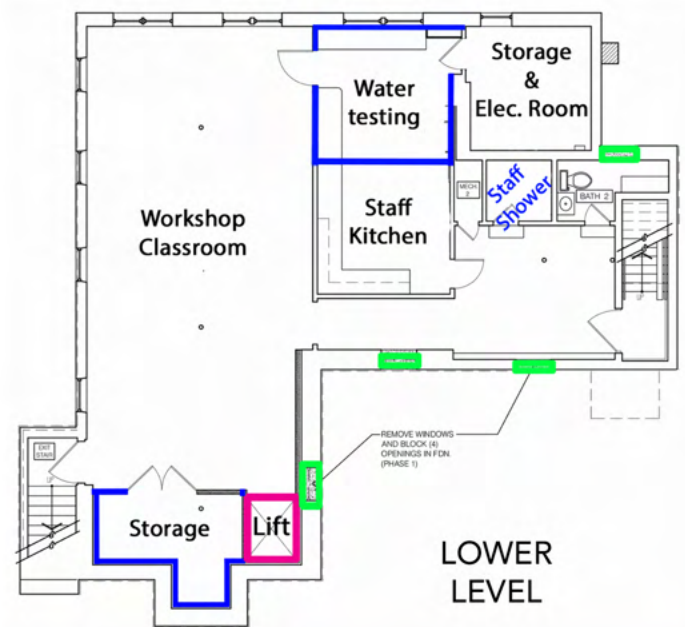
- Offices and open work spaces for BEAT staff and volunteers
- Work space as a resource for the neighborhood and community

EVENT SPACES

- Multiple, indoor and outdoor, adaptive spaces for BEAT events and organizational partner or community events

A MODEL SUSTAINABLE PROPERTY

- Photovoltaic array
- Battery storage
- 'islanded' microgrid
- Recharging center: power and warming/cooling for the community
- Green infrastructure for stormwater treatment
- Demonstration gardens showcasing native plants and supporting pollinators



Because an informed and engaged public is the environment's best defense!

BERKSHIRE ENVIRONMENTAL ACTION TEAM • 20 CHAPEL ST. PITTSFIELD, MA 01201

a model for sustainable buildings and landscapes

ENVIRONMENTAL LEADERSHIP & EDUCATION CENTER



SPRING EPHEMERAL GARDEN

RESTORED RIVERBANK
WITH NATIVE PLANTS,
WILDLIFE HABITAT,
ACCESS FOR RIVER
MONITORING

HOUSATONIC RIVER

PHOTOVOLTAIC ARRAY

OUTDOOR
CLASSROOM

POLLINATOR GARDEN

POLLINATOR MEADOW
& STORMWATER SWALE

EV CHARGING STATION

PARKING AREA

POLLINATOR MEADOW

MELBOURNE RD.

CHAPEL ST.